

CORAL Tree (Jatropha multifida)



Flower



Locations

- **Behind Villa 141 next to the White Frangipani Bush**
- **hiding just east of the guard shack amidst the ficus trees**

Also called Guatemala rhubarb (Duh!)

CORAL Tree (Jatropha multifida)



Flower



Locations

- **Behind Villa 141 next to the White Frangipani Bush**
- **hiding just east of the guard shack amidst the ficus trees**

Also called Guatemala rhubarb (Duh!)

PRIDE OF BARBADOS (Caesalpinia pulcherrima)



Locations: 2

- 2 Along east wall of office building.
- There is a Drumstick Tree between them

- Also called “Peacock flower”

Flowers



Passion Plum (Passiflora foetide)

Location

Only one on the small island at entry to the parking lot just west of villa 451



Native **and** is a carnivore on small insects. Note the fine lace work surrounding the developing fruits

Cape Honeysuckle (Tacoma capensis)



Location

Bush oceanside of villa 406



Location

Song of India (Dracaena reflexa)

Rubber Vine (Cryptostegia grandiflora)



Location

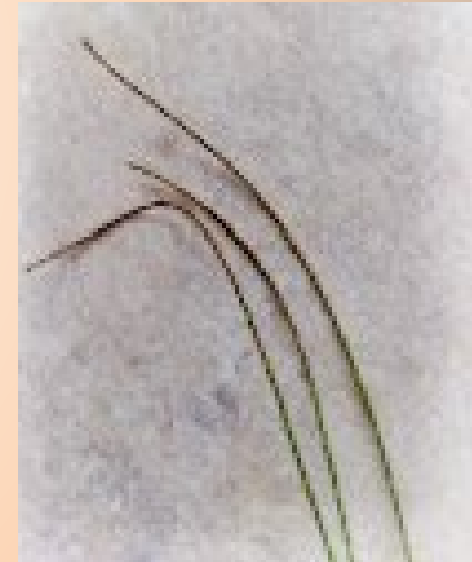


Horsetail Tree/Ske-Oak (Casuarina equisetiflora)



Location

On west slope from pool behind villas 406-407



Note Segmented leaves

OCTOPUS TREE (Schefflera actinophyl)



Flower



Fruit



Locations 2

- **In atrium of Villa 403, visible from pool area**
- **On front terrace of Villa 433**

Also called "Umbrella Tree"

DRUMSTICK TREE (Moringma oleifer)



Triangular-shaped seed pod



Locations: 2

- **East edge of 9th fairway along cart path**
- **East wall of office**

Also called: "Moringa"

WHITE MANJACK (Pulmeria alba)



Locations many

- Golf course near 3rd Green ,
- Behind golf shop,
- A triad with a Neem and Fish Poison Trees on road to pool
- Just west of Geiger Tree



Fruits

Native in STX

WHITE FRANGIOPANI TREE (Pulmeria alba) & Bush (P. pudica)

Tree



Flower



Bush



Locations many

Trees 2:

East of villa 401 (picture)

North of villa 126

Bushes several:

South of entry gate office (picture)

Found throughout the villas

A notable difference between the two species is the shape of the leaves

POOR MAN'S ORCHID Tree (Bauhinia variegata)



Also called the Orchid Tree

Locations: a few

- Near Villa 150 & A
- Along Upper/Lower West Coral Drive



Flowers



CALABASH TREE (Crescentia cujete)



Location 1

South edge of second fairway

Flower and fruits yet to be seen

GINGER THOMAS (Tecoma stans)



Flowers and seed pods can be seen on bush

Locations many - many

- **Throughout the community**
- **Along most roadways**
- **Near many of the villas in both sections**

Native to STX

CARAMBOLA TREE (Averrhoa carambola)



Location 1

East planter of Deli between two Terpentine Trees

No fruits in May
Send us a picture in summer, please

Flowers



WEEPING FIG (Ficus benjamina)



Location 1

On edge of entry roadway to the east of 9th fairway



Berries and leaves



Vine structure surrounding trunk

CUBAN PINK TRUMPET TREE (Tabebuia pallida)



**Flower &
Leaves**



Locations: 2

- **Behind Villa 150 &**
- **East of first green near old pavement**

- **Native to STX**

LIMBER CAPER (Capparis flexuosa)



Day time

Locations:

- **Along fence east of parking for villas 128-130**
- **Prominent vine in Mangrove area west of service road from R-O to Duggin's**

This is a vine wrapped around a Jamaica Caper (see next slide) & it is a night blooming flower



Night time



JAMAICA CAPER (Capparis cyanophallophora)



A distinctive feature of this specimen is the tree trunk which has a spotted gray bark

Location 1

Found along fence line east of Parking area of villas 128- 129. It is surrounded by a Limber Caper vine

Native of STX



flower

BUTTONWOOD MANGROVE ORNAMENTAL (Conocarpus erectis)



Locations: several

- **Beach,**
- **Pool,**
- **Throughout the villas**

This is a genetic variant of the green Buttonwood Mangrove appearing silver/gray, generally found as a bush

Fruits



FICUS (Ficus sp.)



Location 6

There is a row of trees along road just S/E of entrance gate

These were planted by Pat Cuppard decades ago. Since we have not observed either flowers or seeds, we have not been able to attempt to classify

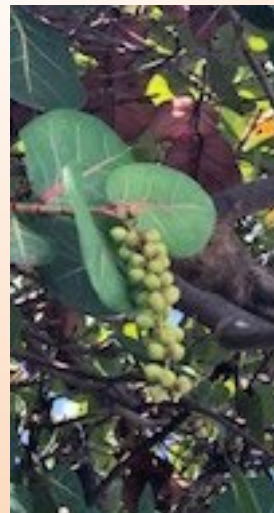
SEA GRAPE TREE (Coccoloba uvifera)



Locations:

- Beach east and west of restaurant
- Golf course along fairways of many holes
- Throughout villas in both sections

Leaves and
fruits



CASHA BUSH (*Acacia farnesiana*)



Locations:

Throughout brushy region of the property especially along walk from pool to cisterns



Thorns & flowers



TANTAN (Leucaena leucocephala)



Locations:

- Found extensively in bushy areas and
- Grows as weed in the common areas



Seed pods and **flowers** Wait until
next year for flowers

BELLYACHE BUSH (Jatropha gossypifolia)



Location: 1

Low bush south of the 4th tee

Flowers



GARDENIA BUSH (Gardenia jasminoides)



Locations 2

- Villa 127 at bottom of ramp:
- Behind Villa 141

Flower



WHITE SPIDER LILY (Hymenocallis caribaea)



Flower

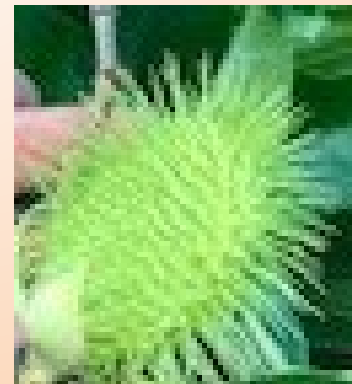


Locations: several plants

- East of Villa 402,
- S/E of gate house

PURPLE & YELLOW ALAMANDA PLANTS (Alamanda sp.)

Locations: Through out the property



BEACH HALF-FLOWER (Scaevola sp.)



Location: On Beach, Villa 433



OLEANDER (Nerium oleander)



Location: 1

Along Meggie Hill Road at the juncture of the white rail and the chain link fences.

- **A large bush with a simple white colored flower;**
- **and a smaller bush with a more complex red flower**
- **Both plants are toxic**



BOUGANVILLEA Bouganvillea sp.



Locations: many

- **Throughout the community**
- **Appears with many different inflorescence from white to deep purple.**
- **Very thorny bush**

More inflorescence to come

PURPLE ALAMAANDA (*Alamanda blanchetii*)



Location

On the east bank of the long pond and just west of 2nd green

GOLDEN ALAMANDA (*Alamanda cathartica*)



Location
Location

Northedge of office building