

THE REEF ONE BEDROOM VILLA - FURNITURE PACKAGE

Living Room

- 1 Convertible Sofa
- 2 Sitting Chairs
- 2 Pillows
- 1 Bar Cart
- 2 Parsons side tables
- 1 Coffee Table
- 2 Table Lamps
- 1 Dining Table
- 4 Dining Chairs
- 1 Dining Chandelier
- 6 Pieces Art Work
- 1 6 X 9 Rug

Bedroom

- 1 Headboard
- 1 Swing Frame
- 2 Box Springs - mattresses
- 1 Dresser
- 1 Mirror
- 1 Semi-Lounge Chair
- 2 Night Tables
- 2 Night Table Lamps
- 1 Queen Size Bedspread
- 1 Dresser Lamp
- 4 Pillows
- 4 Bed Pads
- 1 Chrome Lamp
- Carpeting

Terrace

- Front - 1 Knoll Chaise Lounge
- 2 Knoll Lounge Chairs
- 1 Set nesting tables
- Rear - 1 Dining Table
- 4 Dining Chairs

Kitchen Area

China

- 6 each - Dinner plates
- Fruit dishes
- Salad Plates
- Cups & Saucers
- 2 each - Platters
- Serving Dishes
- 1 Creamer, 1 Sugar Bowl

Silverware

- 6 each - Dinner Forks & Knives
- Salad Forks
- Soup Spoons
- Teaspoons
- 2 Serving Spoons

Glassware

- 6 - 7½ oz. Tumblers
- 6 - 11 oz. Tumblers
- 6 - 11 oz. Goblets
- 2 Ice Buckets
- 1 - 11" Salad Bowl
- 6 - 6" Salad Bowls
- 2 - 8" Ash Trays
- 4 - 4" Ash Trays
- 1 Measuring Cup
- 1 Set Measuring Spoons
- 1 Set Mixing Bowls
- 1 Plastic Drain Rack
- 1 Plastic Silver Tray
- Pair Pot Holders
- 1 Butcher Knife
- 1 Paring Knife
- 1 Can Opener
- 1 Cork Screw
- 12 Cup Percolator
- 1 - 7 piece Teflon Set

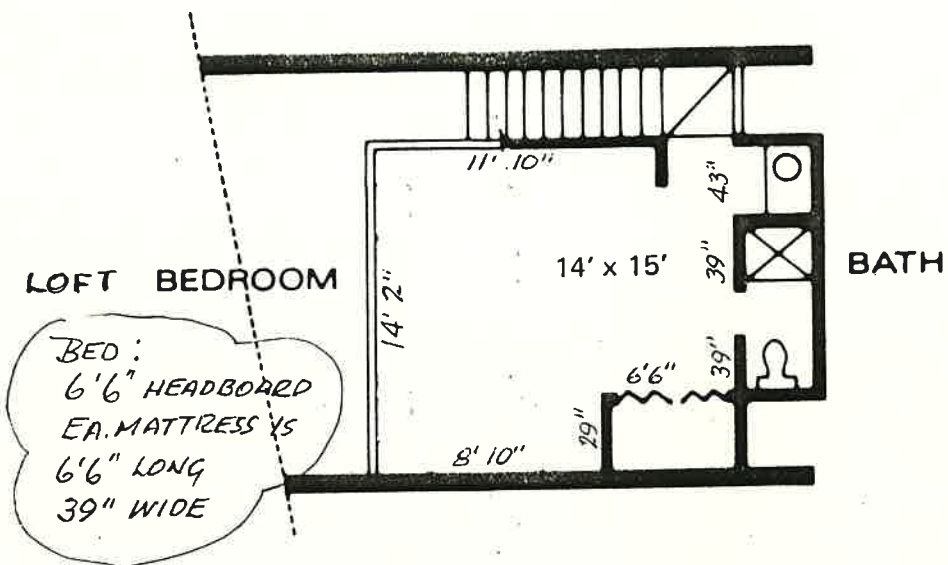
THE REEF - One Bedroom Villa - Furniture Package
Page 2.

(Kitchen Area)

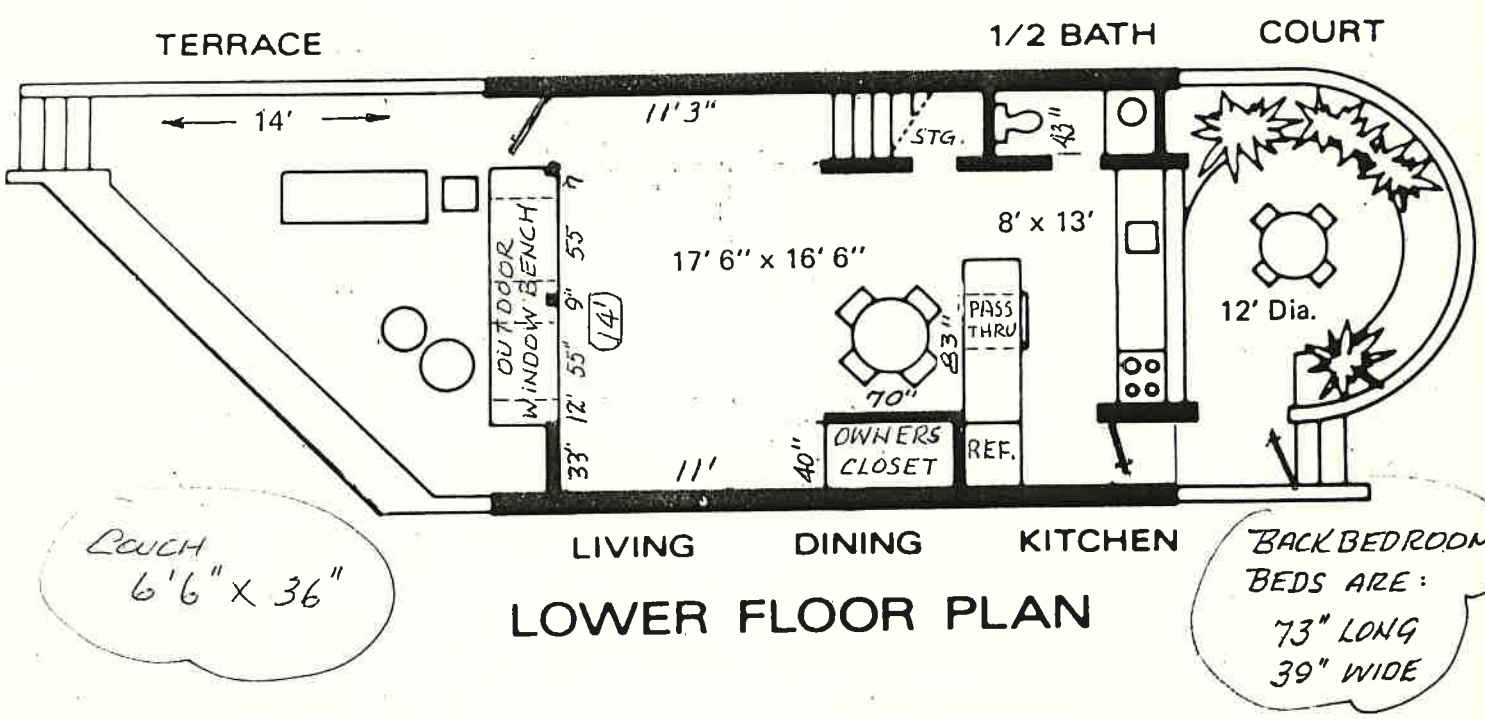
1 7 piece Kitchen Set	1 Waste Basket
Pair Salt & Pepper Shakers	2 Pitchers, Ice Lip
1 Electric Toaster	1 Carving Board
1 Strainer	

Linen, Blankets, etc.

- 4 Shower Curtains
- 4 Shower Curtain Liners
- 30 White Sheets
- 30 Pillow Cases
- 30 Bath Towels
- 30 Medium Towels
- 30 Wash Cloths
- 20 Dish Towels
- 4 Bates Blankets



UPPER FLOOR PLAN

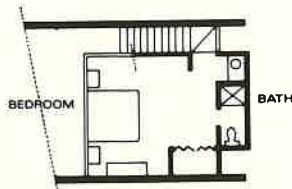


LOWER FLOOR PLAN

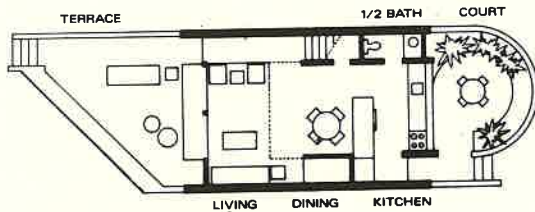
THE ONE-BEDROOM CONDOMINIUM



THE Reef

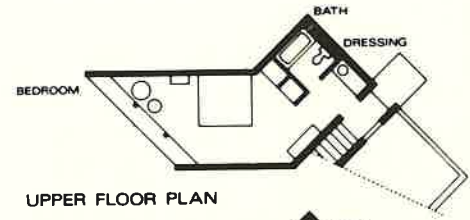


UPPER FLOOR PLAN

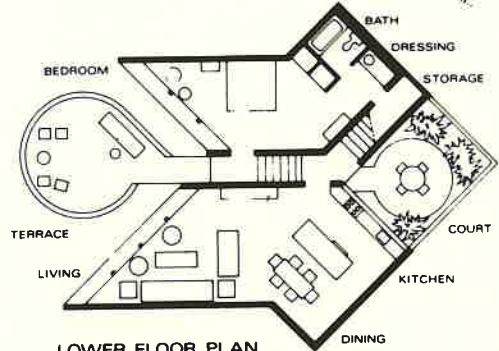


LOWER FLOOR PLAN
ONE BEDROOM VILLA

THE ONE-BEDROOM CONDOMINIUM. A wall of louvers, so characteristic of island living, opens up the two-story living room to the soft movement of trade winds and the spectacular view of the Caribbean. The 1,300 square feet of living space includes the soaring living-dining area, the carpeted bedroom which overlooks the living room, a ceramic tile master bath, plus a half bath downstairs, the walled rear court for indoor-outdoor living, and the superbly equipped kitchen. There is also a spacious front terrace. Meal-making is simplified with the 147 cubic foot refrigerator-freezer, range with radiant heat broiler, dishwasher and disposal. Surfacing materials of wood, brick and stucco were chosen for maintenance-free tropical living. Masonry construction exceeds specifications of The Miami Hurricane Code. All rooms are air-conditioned for year-round comfort.



UPPER FLOOR PLAN



LOWER FLOOR PLAN
TWO BEDROOM VILLA

THE TWO-BEDROOM CONDOMINIUM. This ingenious plan of 1,675 square feet is angled for privacy and convenience. Two identical bedrooms and baths are stacked one above the other, each a half flight from the living-dining area. The angle of the bedroom and living room wings shelter the low-walled terrace . . . located on the lower level so that views to the golf course, the beach and Buck Island are unobstructed from any room. There is a second outdoor living area in the walled court opening off the kitchen with a pass-through access. Ceilings cant upward in the living area and in one bedroom, their heavy beams and exposed planking reminiscent of colonial island architecture. Hinged louvered shutters open outwards to capture the full impact of the view. Materials used throughout the house require virtually no maintenance; the kitchen with its battery of labor-saving electrical appliances makes meal preparation almost effortless.

Owners Pat and Don Coupard were major contributors and owner Ivan Blough donated time and materials to build the nursery. Several Hurricanes and encroaching "mangrove jungle" have tried to destroy the green house, but thanks to the efforts of a new generation of owners, the nursery has survived and is currently being used by owners. Many of the plants cultivated in the green house are transplanted to locations on the golf course and around the villas. A partial source for learning just what plants are on The Reef property can be found - ?

References:

- 1) Interview with Don Manning, 3/17/03
CCC Vice President and first General Manager of The Reef.
- 2) A Short History of The Reef by Pat Coupard, 2004
- 3) "History" prepared for the RAI owners, 2/3/2001
- 4) Reef Notes by Janet Newman, June 2019
- 5) Reef Notes by Chuck Taylor, March 2019.
- 6) Letter to Owners (9/25/1989), RAI Annual Minutes 2/15/1992
- 7) A Botanical History by Pat Coupard
- 8) Duggan's Reef Restaurant Menu (backside)

Copy

Attachments:

Attachment I: 1) 1970 CCC Annual Report

- 2) Original promotional brochures for The Reef (1970)
- 3) Data Sheet/outreach to prospective owners

- 4) Homesite Purchase Agreement and Conditions of Purchase (1970)
- 5) Declaration of Restrictions—Homesites (9/26/1972)

Attachment II: 1) One Bedroom Villa Furniture Package (1970)

- 2) Floor Plan of One Bedroom and Two Bedroom villas (1970)
- 3) Map of The Reef complex, including golf course, practice range & putting green, Section I&IV villas, swim club, pro shop, cart storage, commissary, laundry, tennis courts, administrative offices, proposed hotel site, and proposed Beach Club. (1970)

Attachment III: 1) "Facts About Construction and Facilities" (January 1972)

- 2) "Price List for unsold Villas: Section IV and Section I" (March 1, 1972)

Attachment IV: Photos taken in March 1973 of The Reef pier/dock, beach cabanas, villas, golf course.